

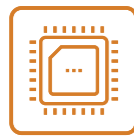
CPC-1818

6U CompactPCI Motherboard

CPC-1818 is a standard 6U CompactPCI motherboard based on Intel® Skylake platform. The product contains Intel® 6th Gen high-performance, low-power processor, and onboard 8GB DDR4 memory. It provides 2 x VGA port, and multiple IO ports such as 3 x Gigabit LAN port, 4 x COM port and USB3.0. The product adopts Intel® Skylake-H platform, providing high-performance processing capability while reducing power consumption. The product provides multiple IO ports such as Ethernet/USB3.0/SATA3/COM ports, and can realize wider bandwidth data transmission. The product complies with PICMG 2.0 CompactPCI® specifications, and supports optional wide temperature and rugged versions. It can be used in application fields having relatively high requirements for reliability and availability, such as in-vehicle, airborne, and rail transit applications.



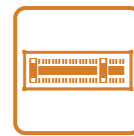
Product Features



Onboard 6th Gen Skylake platform high-performance Intel® Core™ i7 processors



Onboard 8GB DDR4 memory, 16G SSD



Multiple IO ports, supporting multi-display function

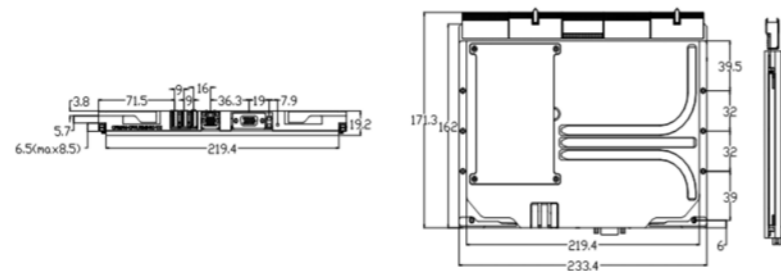


Conduction Rugged version to meet the requirements of rugged applications



Complies with EN50155 specifications, and meets the requirements of rail transit application

Product Dimensions Drawing



Please refer to the user manual to check detailed specifications and dimension. (Unit: MM)

Product Specifications

Item	Description	
System Configuration	Processor	Intel® Core™ i7-6822EQ processor 2.0GHz (8M Cache, up to 2.80 GHz, quad-core 8-thread)
	Chipset	Intel® Skylake-H +PCH-H CM236
	Memory	Onboard 8GB, DDR4 2133, supporting Un-buffered NO ECC dual-channel function
Display Port	2 x VGA, one brought out from the backplane, supporting dual-display output under the operating system	
LAN	Front panel: 1 x Gigabit Ethernet port Rear panel: two independent 10/100/1000M Ethernet ports to the rear IO board	
IO Ports	USB: 5 x USB port, including USB3.0*2 + USB2.0*1 at the front panel, USB2.0*2 + USB*6 brought out to the rear panel COM: 4 x DB9 at rear panel, supporting RS232/RS485/RS422COM port, 4 x RS232COM port customizable on the rear panel	
Storage	Provides 5 x SATA interface Among them, 1 x SATA hard disk interface onboard, used for 2.5" hard disk onboard; the other four SATA interfaces are brought out to rear I/O board	
Working Temperature/Humidity	Working temperature: -25°C ~ +55°C Relative humidity: 10%~90% non-condensing	
Storage Environment	Temperature: -40°C~+70°C Humidity: 10%~95% (non-condensing)	
Mechanical Specifications	Dimensions: 233.4mm (L) × 162mm (W) × 19.2mm (H) shock: 20g, 11ms Vibration (5Hz-200Hz): 1.5g (working state) 2.0g (non-working state)	
Compatible Specifications	PICMG 2.0 R3.0 Compact PCI Specification	
Operating Systems	Windows7 32/64bit, Windows8.1 64bit, Linux	

* As for environment, EMC and other indices, the Technical Agreement between the two parties shall prevail.

Note: The final interpretation rights for product specifications, ordering information, etc. belong to EVOC Intelligent Technology Co., Ltd.