

CPC-1820

6U CompactPCI Motherboard

CPC-1820 is a standard 6U Compact PCI motherboard. The motherboard adopts Skylake-H platform HM175 chipset, onboard latest 16GB DDR4 memory, and Intel's 6/7th Gen high-performance Intel® Core™ I7 series intelligent processors. Its graphics core integrates Intel® HD 530 Graphics engine, supporting DX12 and InTru 3D output. The motherboard has multiple IO ports, including 2 x Gigabit LAN port, 1 x VGA and 1 x HDMI display port, 3 x USB3.0 port, 1 x COM port, 1 x M.2 2280 NVME storage port, 1 x MSATA port, 1 x HDD light, 1 x PWR light/RST button.



The main components of this product, including processor and memory, adopt an onboard design, so as to ensure high reliability of the system to the greatest extent. The product is designed for harsh environments such as aerospace, airborne, in-vehicle, and ship-borne applications, and can meet the requirements of radar, high-speed communication, data acquisition, and other application fields.

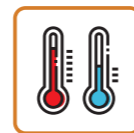
Product Features



Onboard lower power Intel® Xeon™ Xeon E3-1505LV5 processor (quad-core 8-thread)

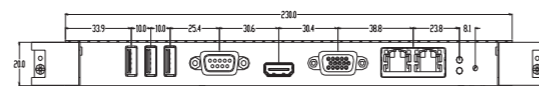
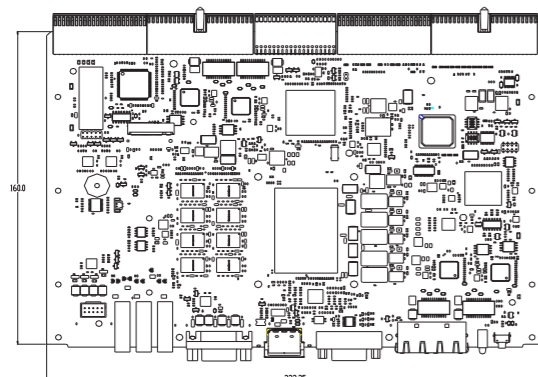


High-performance mobile workstation level processing capability, to meet the requirements of intensive computing applications



Wide temperature and rugged cold-conduction optional

Product Dimensions Drawing



Product Specifications

Item	Description	
System Configuration	Processor	Onboard i7-6822EQ 2.0GHz turbo 2.8GHz, quad-core 8-thread
	Chipset	Mobile Intel® HM175 Chipset
	Memory	Onboard 16G DDR4 memory, supporting expansion up to 32GB DDR4 memory
Display port	The platform supports VGA and HDMI dual-display Front panel VGA and HDMI: supports VGA resolution up to 1920×1080@60Hz, and supports HDMI resolution up to 4096×2304@60Hz Rear panel: 1 x VGA display port (brought out via backplane connector), supporting resolution 1920×1080@60Hz	
LAN	Front panel: provides 2 x Gigabit Ethernet port Rear IO board: supports 2-channel independent 10/100/1000M Ethernet port to rear IO board	
IO Ports	Front panel: from left to right: 3 x USB3.0 port, 1 x RS232/422/485COM port, 1 x HDMI and 1 x VGA display port, 2 x Gigabit LAN port Rear panel: 4 x USB 2.0, 2 x RS232/422/485COM port, 1 x PS2, 1 x LPT port	
Storage	1 x M.2 2280 NVME storage port and 1 x MSATA port, to facilitate expansion to SSD	
Working Temperature/Humidity	Working temperature: -10°C~55°C (-25°C~70°C wide-temperature optional)	
Storage Environment	Temperature: -40°C~+85°C Relative humidity: 5%-90% non-condensing	
Mechanical Specifications	Size specifications: 6U 4HP × 233mm × 160mm (H×W×D) Shock: 20g, 11ms (Working state) Vibration (5Hz-200Hz): 1.5g (Working state) Damp heat test: Under the condition of 100% relative humidity, there is no corrosion of metal parts; 40°C±2°C, under the condition of 93% relative humidity, normal storage and operation can be maintained	
Compatible Specifications	PICMG 2.0 R3.0 Compact PCI Specification	
Operating Systems	Windows7 64-bit, Windows10 64-bit, Linux and other operating systems	

Ordering Information

Part No.	Model	Description
0030-024111	CPC-1820	6U CompactPCI motherboard/i7-6822EQ 2.0GHz quad-core 8-thread/onboard 16GB DDR4/1 x M.2 2280 NVME port&1 x MSATA port/IO ports at front: 1 x VGA, 1 x HDMI, 2 x Gigabit LAN port, 1 x DB9COM port, 3 x USB3.0/1 x HDD

* As for environment, EMC and other indices, the Technical Agreement between the two parties shall prevail.

Note: The final interpretation rights for product specifications, ordering information, etc. belong to EVOC Intelligent Technology Co., Ltd.