

N15-01B

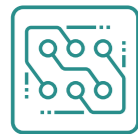
Network Application Platform

The brand-new N15-01B's economical network security hardware solution is developed based on Intel® Atom 3rd Gen C3000. The product has a 1U, 19" standard rack mount chassis. It supports 1 x Mini PCI_E slot, 1 x PCI_E (signal X1, supporting peripheral devices such as encryption cards); 2 x USB port and 1 x Console port at front; onboard up to 6 x Gigabit LAN port; and 1 x ENS network expansion in the high configuration. The complete PC supports up to 14 x Gigabit LAN port.

N15-01B is mainly used in firewall, anti-virus wall, next Gen firewall, application delivery, traffic management, VPN, DNS, IDS/IPS, UTM and other scenarios.



Product Features



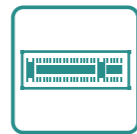
C3000 processor



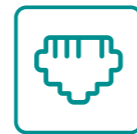
2 x DDR4 memory



Onboard 6 x Gigabit electrical port+2 x Gigabit optical port+2 x 10 Gigabit optical port



1 x mini-PCIe slot

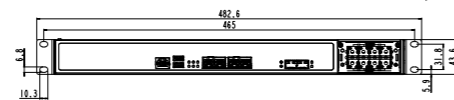
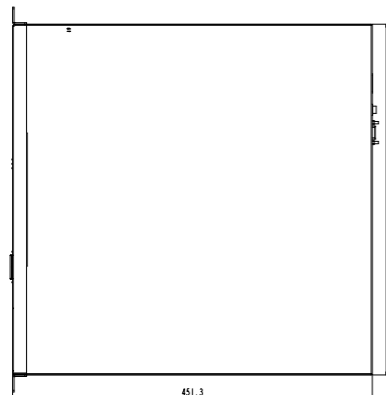


1 x SATA 3.0 interface and 1 x MSATA slot



Supports hard disk encryption and intrusion detection

Product Dimensions Drawing



Please refer to the user manual to check detailed specifications and dimension. (Unit: MM)

Product Specifications

Item		Description
System Configuration	Processor	Intel® Atom C3000 series processors in FCBGA1310 package, supporting C3000 and REFRESH all series CPUs
	Chipset	SOC
	Memory	2 x DIMM slot, supporting up to 128GB
Storage Ports	SATA	High configuration: supports 1 x SATA port
	MSATA	Low configuration: supports 1 x MSATA slot
IO Ports	USB	2 x USB3.0 (at front)
	COM	1 x RJ45 Console port (at front) , RS232 mode by default, supporting re-direction function;
Display port	1 x VGA port (optional function, which can be brought out at rear) Note: If necessary, please indicate VGA and accessory part number 1060-009761 when placing an order;	
Network Chip	Intel® I210/I211	
LAN Ports	Supports 6 x LAN port onboard; Solution 1: onboard 6 x Gigabit electrical port; Solution 2: onboard 4 x Gigabit electrical port + 2 x 10 Gigabit optical port	
GPIO	Motherboard supports 8-channel digital GPIO	
Expansion Bus	PCIe	1 x standard PCIe 8X slot (X1 signal)
	ENS	High configuration: supports 1 x ENS network card expansion slot
Matched Motherboard	NET-1832VD6N series	
Working Environment	Temperature: 0°C~40°C Humidity: 10%~95% (non-condensing)	
Storage Environment	Temperature: -20°C-70°C Humidity: 10%-95% (non-condensing state)	
Power Supply	Low configuration (no network expansion slot) : 1*60W single power supply, compatible with dual-power-supply High configuration (1 x ENS expansion slot) : 1*150W single power supply	
Dimensions (W×H×D)	440mm (W) × 44mm(H)× 450mm (D)	
Supported Operating System	Linux OS system (kernel version above 2.6). Please refer to EVOC Product Manual for details	

Ordering Information

Part No.	Model	Description
0010-176171	N15-01B-01/ C3558/8G/64G/60W single power supply	Intel® C3000 platform/C3558/single memory slot/onboard 6*Gigabit electrical port/2*USB 2.0/1*console port/1*MSATA slot/no ENS expansion slot/1* PCIe X4 standard slot
0010-176181	N15-01B-02/ C3558/8G*2/1T/150W single power supply	Intel® C3000 platform/C3558/dual memory slots/onboard 6*Gigabit electrical port/3 groups of bypass/2*USB 2.0/1*console port/1*MSATA slot/1*SATA interface/1*PCIe X4 standard slot/1 x ENS expansion slot (X4 signal)
0010-176201	N15-01B-04/ C3558/8G*2/1T/150W single power supply	Intel® C3000 platform/C3558/dual memory slots/onboard 4*Gigabit electrical port+2*10 Gigabit optical port/2 groups of bypass/2*USB 2.0/1*console port/1*MSATA slot/1*SATA interface/1*PCIe X4 standard slot/1 x ENS expansion slot (X4 signal)

Note: The final interpretation rights for product specifications, ordering information, etc. belong to EVOC Intelligent Technology Co., Ltd.